

cuturigallery

SNAKES AND
LANTERNS

LINDSEY JEAN MCLEAN

7 OCTOBER - 5 NOVEMBER 2023

cuturigallery

Cuturi Gallery is a next generation art gallery founded on the belief that art should be empowering and meaningful for everyone. A curator of change and a custodian of artistic diversity, Cuturi Gallery is a challenger of vested interests and of the status quo, pushing the boundaries of how galleries operate. The gallery connects broad audiences to high-quality art by diverse talents that speaks to the heart and tells the story of an undiscovered generation of aspiring artists that will have the art world aching for more.

Diminishing aristocratic traditions and providing transparency in an art world that is at times daunting, Cuturi Gallery presents an inclusive and democratized art ecosystem which fosters greater collaboration, understanding and appreciation of art amongst artists, collectors and the industry at large.

Cuturi Gallery is pleased to present ***Snakes and Lanterns*** by **Lindsey Jean McLean (b. 1991, United Kingdom)**, marking her inaugural solo exhibition in Southeast Asia. Immersing herself in the vibrant tapestry of Kampong Glam, McLean distils the essence of the city's architecture, hues and scent onto her canvases. ***Snakes and Lanterns*** displays her experience during her residency in Singapore, translating these encounters onto her canvases.

Diverging from her previous artistic endeavours, this series of work introduces a bold infusion of colour and form deconstruction into McLean's practice, resulting in a mesmerizing fusion of abstraction and figuration. Her time in Singapore has pushed the boundaries of intuition beyond illusion, signifying a notable evolution in these works.

Recurring motifs such as fans, feather boas, and veils take on profound significance within McLean's artistic discourse. These motifs challenge conventional interpretations of femininity in art history, engaging with contemporary perspectives on gender, sexuality and power dynamics. One of the most used motifs - the veil, disrupts the engagement the viewers would have with figures in a painting. It serves as an intriguing juxtaposition of invitation and concealment and this barrier allows freedom for the figures in her works to control the viewer's gaze.

McLean's paintings also explore the medium itself, with each fluid brushstroke forming lyrical compositions that transition gracefully between pure figuration and abstraction. Despite the harmonious interplay of colour and form and the opulent accoutrements, they have a sense of unease. This unsettling atmosphere is attributed to the enigmatic shroud veiling the faces of her subjects. Even when their eyes are visible, upon closer inspection, it appears as though they gaze past the viewer, fixating onto the distant horizon. The evocative emotions conveyed through these distant gazes intensify the enigma, infusing the paintings with a distinctly contemporary sensibility.

Emotion serves as the driving force behind each of McLean's creations, with her paintings evolving organically throughout the creative process. She meticulously layers shapes, beginning with a single colour, allowing figures to emerge and dissolve within the canvas. These expressive brushstrokes function as a narrative conduit, lending tangible form to intangible emotions.

Snakes and Lanterns interweaves personal experiences, emotions and artistic techniques into a harmonious tapestry that invites viewers to embark on their emotional odyssey through colour, form and sentiment.

This exhibition will be on view at Cuturi Gallery from **7 October – 5 November 2023**.

Text by Huda Noor



Citrus Boa, 2023

Oil on linen

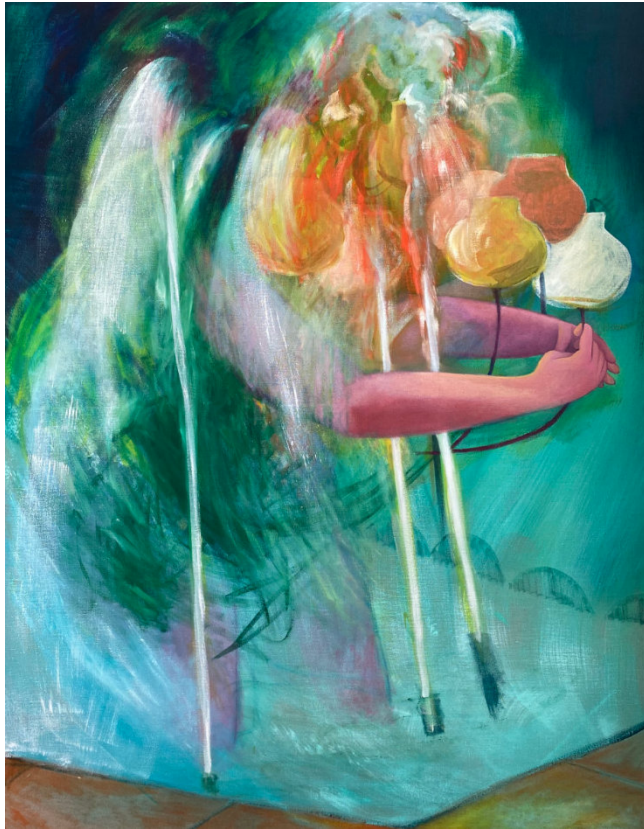
140 x 190 cm



Orchid Blue Boa, 2023

Oil on linen

160 x 130 cm



Fountain, 2023

Oil on linen

140 x 120 cm



Vase, 2023
Oil on linen
120 x 100 cm



Lanterns, 2023

Oil on linen

100 x 90 cm



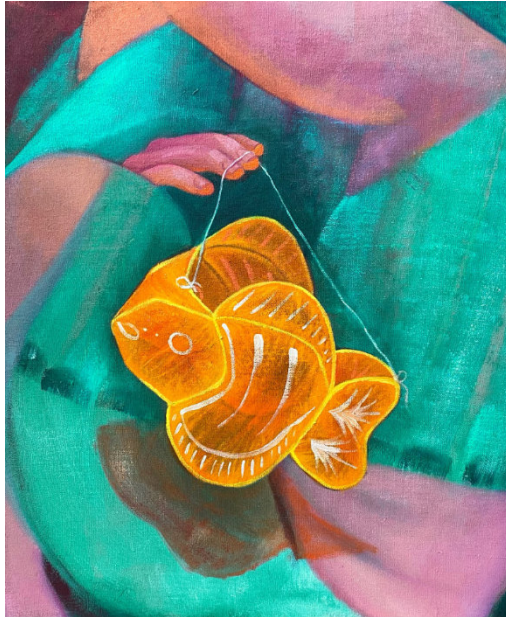
Umbrella, 2023
Oil on linen
90 x 100 cm



Boa Fire, 2023
Oil on linen
90 x 100 cm



Gold Fan, 2023
Oil on linen
95 x 80 cm



Gold Fish, 2023

Oil on linen

60 x 50 cm



Wet Umbrella, 2023
Oil on linen
60 x 50 cm

LINDSEY JEAN MCLEAN

Born in 1991 in United Kingdom.

Exhibitions

- 2023 Sins of a Female Painter, Hew Hood Gallery, London, UK
Who is Your Master?, 1969 Gallery, New York, USA
Who Holds The Sword?, Hypha Studios, London, UK
- 2022 NADA Miami, 1969 Gallery, Miami, USA
Power of Femininity, Kutlesa Gallery, Goldau Switzerland Solo Show,
Galerie Wolfsen, Aalborg, Denmark
- 2021 Now Grads 21, Saatchi, London
Lumoniuss Bodies, Cyprus College of Art, Lempa, Cyprus
Safe As Milk, Arusha Gallery, Edinburgh
- 2020 Curated For Christmas All Mouth Gallery and Bowes Parris Gallery,
Southside Wandsworth, London, UK
Hung Up All Mouth Gallery, The Tub, Broadway Market, London
Material Figures V.O Curations, London
- 2019 Bow Open Show, Selected By Carey Young, Nunnery Gallery, London, UK
- 2016 Royal Academy Summer Show, Burlington House, London, UK
- 2014 Royal Academy Summer Show, London, UK
New Scottish Artists, The Fleming Collection, London, UK
RSA New Contemporaries, Royal Scottish Academy, Edinburgh


Qualifications

- 2019 – 2021 MFA, Slade School of Fine Art
- 2013 – 2014 Diploma, Royal Drawing School
- 2009 – 2013 BA, Glasgow School of Art

cuturigallery

61 ALIWAL STREET
SINGAPORE 199937
SINGAPORE@CUTURIGALLERY.COM

4 CROMWELL PLACE
LONDON, SW7 2JE, UNITED KINGDOM
LONDON@CUTURIGALLERY.COM

 @CUTURIGALLERY.COM
CUTURIGALLERY.COM
TEL+65 8182 0214